

planning.media@lacity.org.
Attention: Alan Como,

City of Los Angeles, Department of City Planning
221 North Figueroa Street, Suite 1350
Los Angeles, CA 90012

REF: Environmental Case No. ENV-2019-4565-EIR

Dear Mr. Como:

On behalf of the Upper Mandeville Canyon Association, I would like to draw your attention to two of our concerns about the Berggruen Institute development plans. Here are illustrations which show the primary ridge on which Berggruen plans to build. The red arrow on the color photograph points to the narrowest part of that ridge which is only about 14ft. wide, with a severe drop-off on both sides.

The L.A. Fire Code states...
503.2.

Fire apparatus access roads shall have an unobstructed width of not less than 20 feet...

In addition to that stipulation there needs to be room for safety walls on either side of that access and egress route. A further complication is that this narrows is located in a designated landslide area which should prevent any construction there.

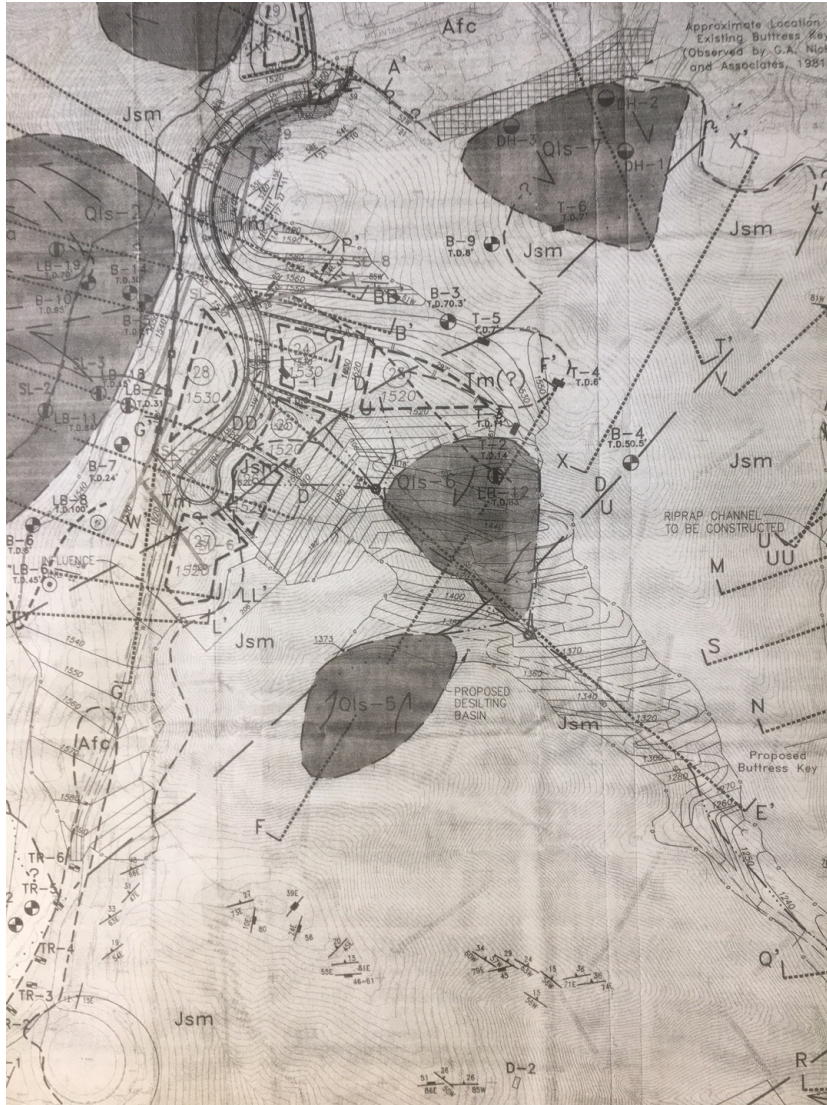
Please see the second illustration below.



This blueprint of that Berggruen site (from the Castle&Cooke EIR), depicts a large dark oval marked by a red arrow. That darkened oval indicates a vast landslide area.



The secondary ridge where Berggruen plans to build more structures or dwellings, is surrounded by landslide areas as depicted by the dark sections of the blueprint below. This area is west of the primary ridge and nearer to Mandeville Canyon.



Thank you for your attention to these matters. We trust they will be addressed and evaluated by the those conducting the Berggruen Institute EIR.

John Binder
President,
Upper Mandeville Canyon Association

310 471 6317